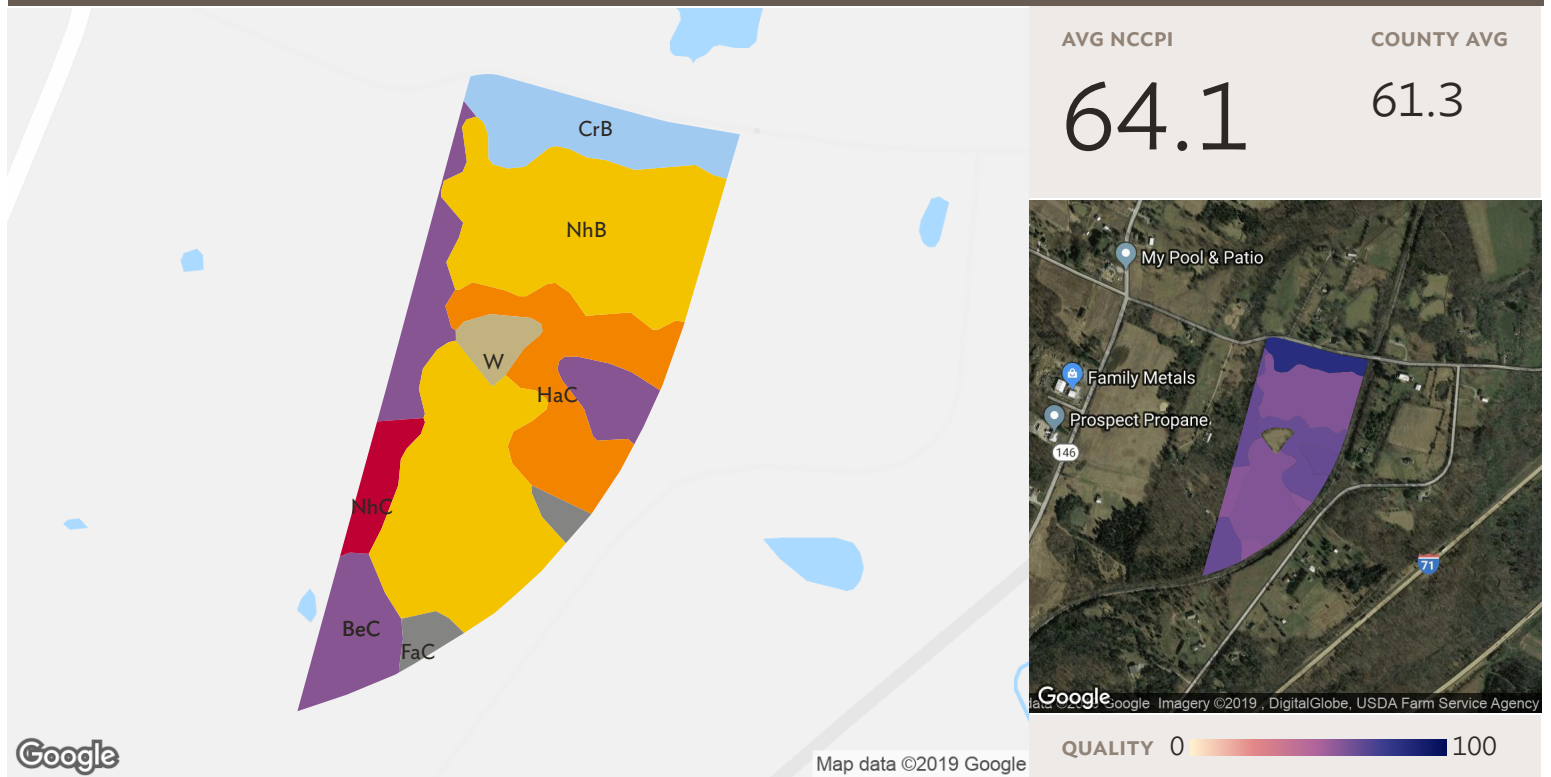
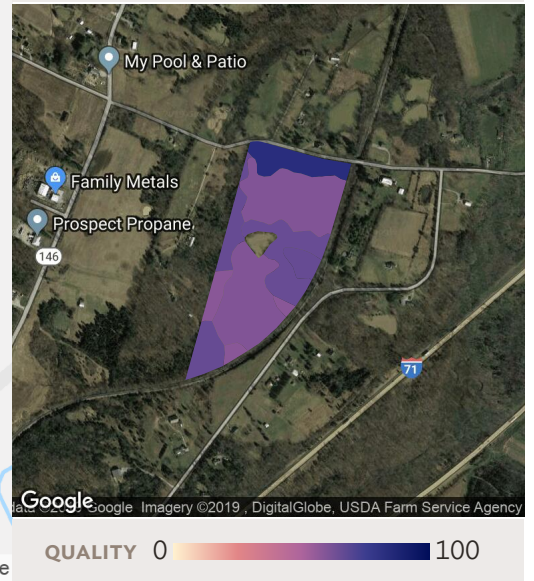


1 field, 39 acres in Oldham County, KY



AVG NCCPI **64.1** COUNTY AVG 61.3



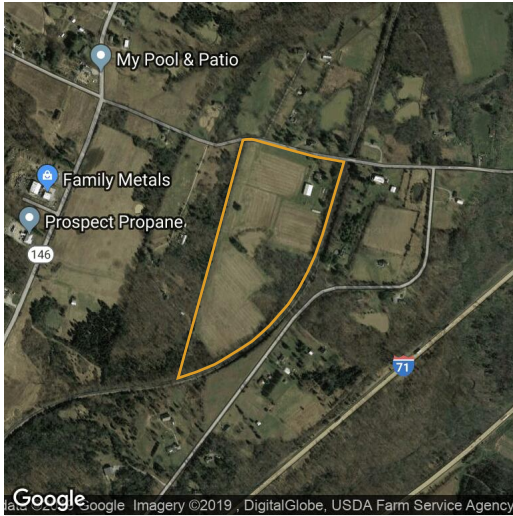
All fields

39 ac

Source: NRCS Soil Survey

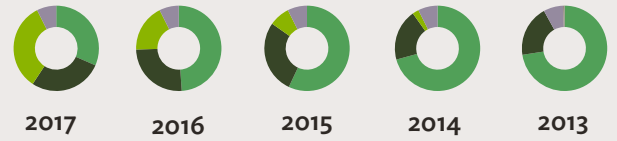
SOIL CODE	SOIL DESCRIPTION	ACRES	PERCENTAGE OF FIELD	SOIL CLASS	NCCPI
NhB	Nicholson silt loam, 2 to 6 percent slopes	18.64	48.1%	2	59.7
BeC	Beasley silt loam, 6 to 12 percent slopes	7.10	18.3%	3	65.7
HaC	Hagerstown silt loam, 6 to 12 percent slopes	5.53	14.3%	3	65.2
CrB	Crider silt loam, 2 to 6 percent slopes	4.15	10.7%	2	82.9
NhC	Nicholson silt loam, 6 to 12 percent slopes	1.53	3.9%	3	57.9
W	Water	1.02	2.6%		N/A
FaC	Faywood silt loam, 6 to 12 percent slopes	0.78	2.0%	3	57.9
		37.73	97.4%		64.1

1 field, 39 acres in Oldham County, KY



All fields

39 ac



	2017	2016	2015	2014	2013
Grass/Pasture	31.5%	48.9%	57.0%	70.8%	72.6%
Forest	27.8%	25.7%	27.8%	19.4%	19.4%
Soybeans	33.3%	18.0%	7.8%	2.4%	-
Non-Cropland	7.4%	7.4%	7.4%	7.4%	7.4%
Other	-	-	-	-	0.6%

Source: NASS Cropland Data Layer